

# **Infinity Software Quick-Start Manual**

Copyright © 2009, Berg Company, LLC

# Infinity Help

**Copyright © 2009, Berg Company, LLC**

All rights reserved.

No part of this publication may be reproduced, transmitted, transcribed, stored in a retrieval system, or translated into any language in any form by any means without the written permission of Berg Company, LLC, Madison, Wisconsin.

## Trademarks

Infinity, All-Bottle, Laser and TAP 1 are registered trademarks of Berg Company, a Wisconsin Limited Liability Corporation.

Other brand and product names may be trademarks or registered trademarks of their respective companies.

Berg Part Number: 5202031

Revision 6.00

Printed in U.S.A.

# Table of Contents

## Infinity Quick-Start

Quick-Start Intro .....	4
Quick-Start Task 1: Install Infinity Software.....	5
Quick-Start Task 2: Brand Wizard.....	6
Quick-Start Task 3: New Network Setup .....	7
Quick-Start Task 4: Device Settings.....	8
Quick-Start Task 5: New ECU Setup.....	9
Quick-Start Task 6: Modify Prices and Portions.....	11
Quick-Start Task 7: Assign Brands.....	12
Quick-Start Task 8: Cocktail Recipes.....	13
Quick-Start Task 9: Assign Cocktails.....	14
Quick-Start Task 10: Broadcast Pending Changes.....	15
Quick-Start Task 11: Dispenser Calibration.....	16
Quick-Start Task 12: Make Test Pours.....	17
Quick-Start Task 13: Brand Calibration.....	18
Quick-Start Task 14: Archive and Clear Sales.....	19
Quick-Start Task 15: Usage Report.....	20
Quick-Start Task 16: Schedule.....	21

## Quick-Start Intro

- ▶ This manual is a quick guide to installing and configuring Infinity software for a fictitious restaurant, *Uptown Grill*.
- ▶ You'll learn the simplest way to get a new installation of Infinity up and running.
- ▶ All tasks are presented sequentially to help guide you from one step to another.
- ▶ However, our example covers only the basics and uses several default options. Several references are made to more detailed topics which can be found in the **Infinity User Manual** in PDF format or in the online **Help**.
- ▶ You can also click **Help** from any Infinity screen for more information.
- ▶ If you are viewing this document from within the Infinity online Help, you can easily access more information by clicking the links to other topics.

## Quick-Start Task 1: Install Infinity Software

### To install Infinity software:

1. Close all other programs running under Windows.
2. Insert the Infinity CD in a CD drive.
3. Click **Install Infinity software**.
4. Click **Yes** to accept the License Agreement.
5. Click **Yes** to confirm the serial number for this installation.  
*Each serial number can only be installed on one PC. Therefore, you will be asked to confirm the serial number at the beginning of installation. See About Activation & Renewal.*
6. Choose **Install Software** as the Setup Type and click **Next**.
7. Click **Next** to accept the default destination directory (**C:\Program Files\Berg\Infinity**).
8. Click **Next** to accept the default folder for Infinity program icons (**Berg Infinity**).
9. Click **Yes** to place the Infinity icons on your computer desktop.
10. Click **No** to not copy online manuals to your hard disk.  
*You can copy the manuals to your computer if you wish. The default is to leave the manuals on the install disk. This saves space on your PC. You can always access Help from Infinity or view/print the PDF version of the manuals anytime by inserting the install CD.*
11. Enter the dealer's name and phone number for technical support and click **Next**.
12. Click **Next** to confirm the installation.
13. Wait while the software is installed.
14. Click **Finish** on the Configuration screen.  
*Uptown Grill is using default options.*
15. Click **OK** to exit Infinity setup.  
*You should now see Infinity program icons on your computer's desktop.*
16. Click the Berg Infinity Program icon to launch Infinity.
17. Remember to activate your license. See About Activation and Renewal.

### Software Installation

- ▶ Be sure to use the Infinity CD with the serial number for this specific site.
- ▶ The CD starts with a selection page where you can select and install programs other than Infinity that are present on the disk. After clicking on a link, you may be asked if you want to run, open or save. Choose run or open.
- ▶ You can change Configuration Options when you install Infinity or at any time.
- ▶ Configuration options include security options, data storage and display options, country options (units of measure), and features.
- ▶ During a new install, a Business Name is given to each installation. The default name for the business will be the folder name, but it is advisable to change to a name that reflects the actual business. See Change Business Name.

## Quick-Start Task 2: Brand Wizard

### To use the Brand Wizard:

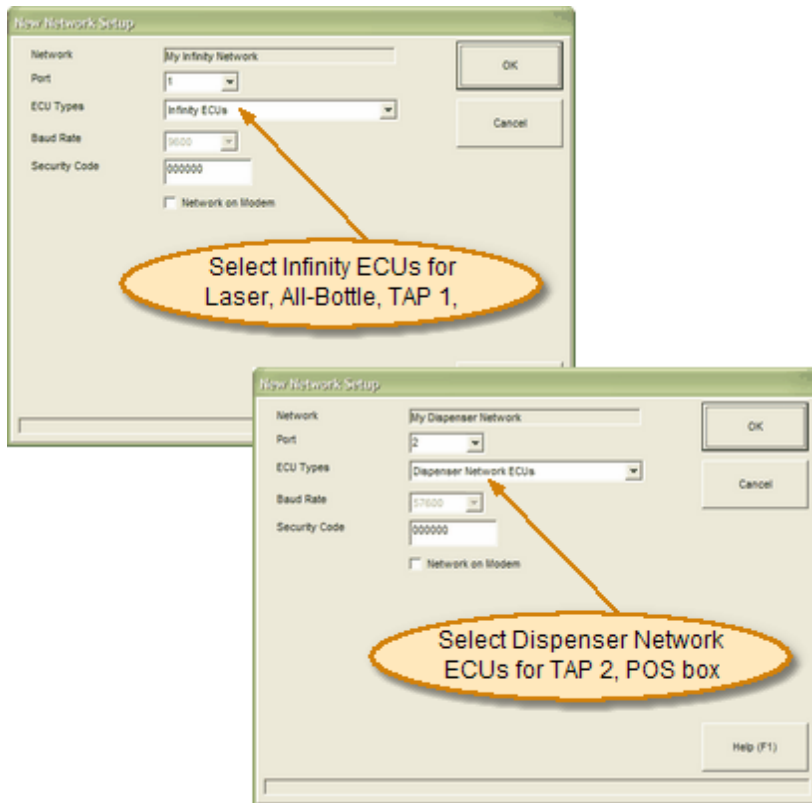
1. Run Infinity.  
*Brand Wizard starts automatically the first time you run Infinity.*
2. Click **Next** to continue.
3. Select the product types you need and click **Next**.  
*Uptown Grill is using all product types.*
4. Select the number of price levels and portion sizes and click **Next**.  
*Uptown Grill uses the default number of price levels and portions.*
5. Type a reasonable portion amount and price for your first price level of Liquor and click **Next**. Repeat for each price level.  
*If you like the defaults shown, just click **Next**.*
6. Repeat steps 4 and 5 for the Cocktail, Wine, Mixer and Other product types.  
*You'll see a new screen for each price level. Simply click **Next** anytime you don't have a better number to enter.*
7. Click **Next** to load the product types selected.
8. Click **Next**.  
*Uptown Grill uses the default container sizes.*
9. Click **Next** to commence loading the brand list.
10. Click **Finish** to exit the Brand Wizard.

### Default Prices and Portions

- ▶ You can just keep clicking Next to accept Berg's default prices and portions.
- ▶ However, it saves time later to enter your default prices and portions for each product type here.
- ▶ For detailed help on any Brand Wizard screen, click **Help** or see the Brand Wizard section in the manual.

## Quick-Start Task 3: New Network Setup

To set up a network:



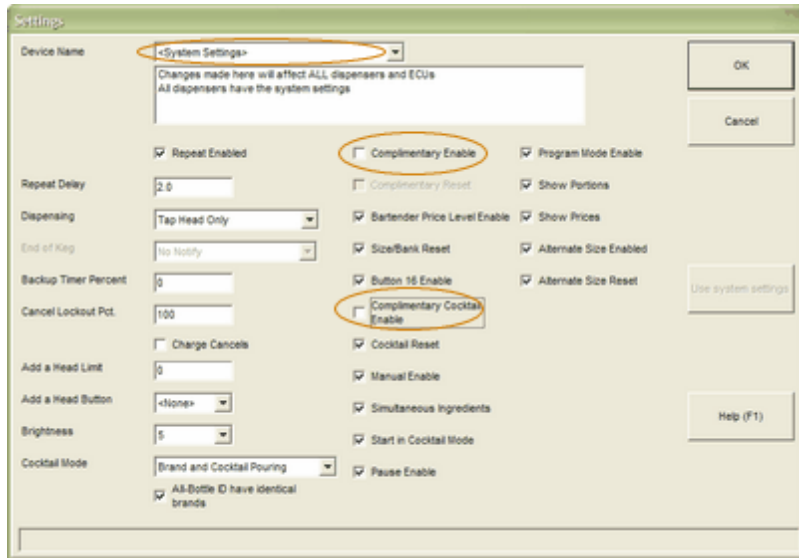
### Port Number

- ▶ If you don't know the port number, the Communication Wizard in the Communications menu can help. (This requires a loopback tester.)
- ▶ Security codes are an optional layer of security, especially in remote networks,.

1. Pull down the **Management** menu and point to **Setup**. Click **Network...**
2. Click **New....**
3. Type your network **New Name** (e.g., "Uptown Grill Infinity") and click **Continue....**
4. Select the computer Port number used for communication with the ECUs.
5. Select the **ECU Types**.  
*Uptown Grill is setting up two networks: an Infinity network and a Dispenser Network. First, we'll select **Infinity ECUs** (for our Laser and All-Bottle dispensers) for our Infinity network. Then we'll set up another new network and select **Dispenser Network ECUs** (for our Tap 2 dispensers).*
6. Select the correct Baud Rate for the computer/network communications.  
*This number is different for Infinity networks and Dispenser networks. Uptown Grill is using the default baud rate of 9600 for the Infinity network and 57600 for the Dispenser network.*
7. Click **OK**.  
*Repeat steps 2-7 for another network. See Network Setup if you need help setting up a Remote Network.*
8. Click **Close** to exit the Network Setup screen.

## Quick-Start Task 4: Device Settings

To enter your system device settings:



### System Device Settings

- ▶ This is where you can set up system-wide dispenser and pouring options.
- ▶ It's a good idea to enter your system settings before setting up a new ECU, so the dispensers will have the system settings.
- ▶ You can always change settings for a specific device later. See Device Settings.

1. Pull down the **Management** menu and point to **Setup**. Click **Device Settings**.
2. Confirm **<System Settings>** displays as the **Device Name**.
3. Click or enter the settings you want to use for your system.  
*You'll see every possible setting for every possible device. See Description of Device Settings for help with each setting. Don't worry about settings not applicable to your system. Since Uptown Grill does not allow comp pours, we'll just uncheck Complimentary Enable and Complimentary Cocktail Enable. Now comp pouring is disallowed on all our dispensers.*
4. Click **OK** to save.
5. Select **No communication at this time** and click **Continue....**  
*This lets you send the settings later, when you're ready to send all setup information to the equipment at the same time.*

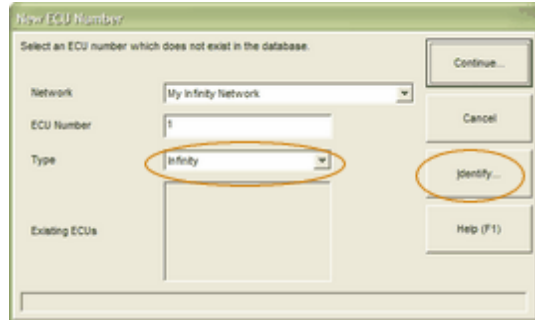


## Quick-Start Task 5: New ECU Setup

### To set up an ECU:

1. Pull down the **Management** menu and point to **Setup**. Click **ECU/ Hardware Station....**
2. Click **New....**

#### *First, we want to set up an Infinity type ECU:*



1. Select the name of the **Network** you set up for Infinity ECUs (e.g., Uptown Grill Infinity).
2. Type the unique ECU number.  
*Uptown Grill's Infinity ECU is numbered 1. (The ECU number must match the number set in the ECU itself.)*

OR

If you don't know the ECU number, click **Identify...** to communicate with the network and determine the next available ECU.

*The next numbered ECU that has not been set up will be identified.*

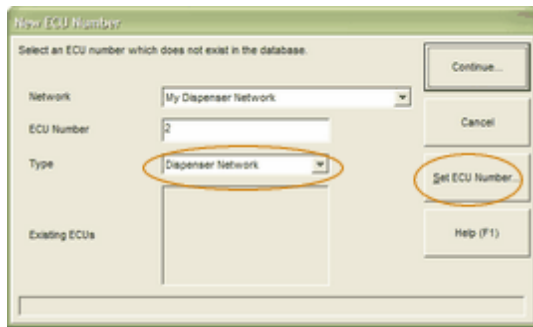
3. Select the ECU Type.  
*Uptown Grill is setting up an Infinity ECU with Laser dispensers.*
4. Click **Continue....**
5. Click in the **Hardware Station** field and type a name for this ECU (e.g., Main Bar).  
*Choose a hardware station name which helps you easily distinguish this ECU in a selection list when you assign brands, run reports, or other operations.*
6. Select the correct **Device Type** for each **Dispenser Number**.  
*Uptown Grill has a Laser-16 for Dispenser 1 and a Laser-6 for Dispenser 2. Depending on the ECU type, you'll see one or more dispenser numbers.*
7. Type a new **Device Name** for each **Dispenser Number**.  
*Use meaningful names (e.g., "Main Laser 16" or "Dining AB 7" to help distinguish your dispensers easily in a list.*
8. Click **OK** to save the ECU.
9. Wait for all communication with the ECU to finish.  
*A message confirms saving the new ECU.*

#### *Second, we want to set up a Dispenser network ECU:*

1. Select the name of the **Network** you set up for Dispenser network ECUs (e.g., Uptown Grill Dispenser).
2. Type the unique ECU number.  
*Uptown Grill's Tap2 ECU will be numbered 2.*
3. Select **Dispenser Network** as the **ECU Type**.

### ECU Setup

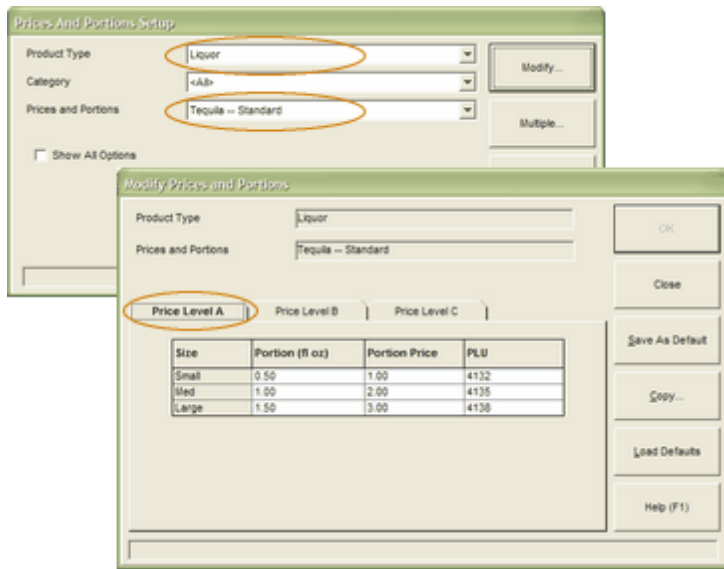
- ▶ It's essential to specify the correct dispensers in the correct positions for ECUs to control pouring at the dispensers.



4. Click **Set ECU Number...** to communicate with the equipment and "set" this number in the ECU itself.
5. Click **OK** to confirm the message. Go to the ECU and cycle power (pull the power out and plug it right back in to the power supply).  
*Wait for communication to occur which assigns the ECU number.*
6. Click in the **Hardware Station** field and type a name for this ECU (e.g., Left Tap 2).  
*Choose a hardware station name which helps you easily distinguish this ECU in a selection list when you assign brands, run reports, or other operations.*
7. Select the correct **Device Type** for each **Device Address**.  
*On dispenser networks, a POS box is considered a device, as well as Tap 2 taps. (The address of each device will be communicated to the hardware when you click OK.)*
8. Type a new **Device Name** for each **Device Address**.  
*Use meaningful names (e.g., 'Left POS' or the brand of a tap--'Left Sam Adams') to help distinguish your dispensers easily in a list.*
9. Click **OK** to save the ECU.  
*A message tells you to press the address button on the device you've assigned to address A.*
10. Go to the equipment you specified for **Device Address A** and press the flashing button.  
*When finished, the software displays the message for the next device.*
11. Repeat step 10 for each device, as prompted.  
*When all the device addressing is done, communication occurs to send all the ECU setup details to the ECU.*
12. Wait for all communication with the ECU to finish.  
*A message confirms saving the new ECU. See *Modify an ECU* for help with dispenser network addressing features.*

## Quick-Start Task 6: Modify Prices and Portions

To modify prices and portions:



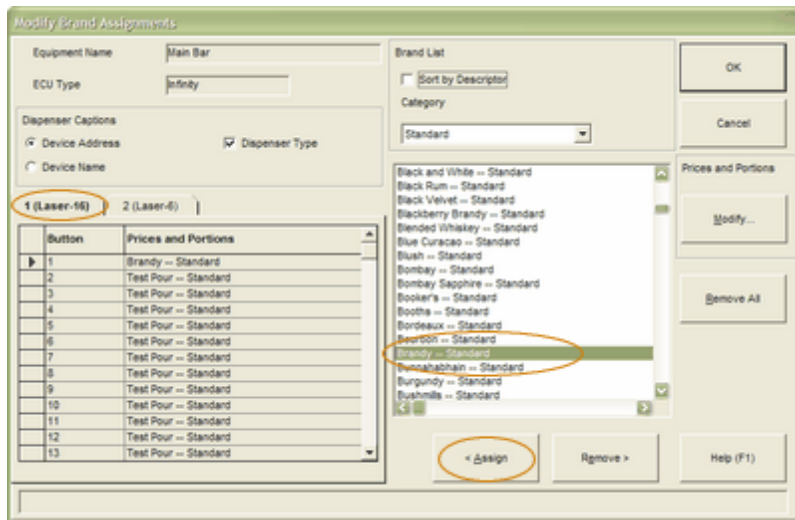
1. Pull down the **Pouring** menu and click **Prices and Portions...**
2. Select a **Product Type** and select a brand's **Prices and Portions** and click **Modify...**  
*Uptown Grill is modifying Tequila-Standard.*
3. Type the correct **Portion** and **Portion Price** for each **Size** listed on the **Price Level A** tab.  
*Type 6 for 6.00 fl oz, or 2 for \$2.00. Repeat for each price level tab you use.*
4. Click **OK** to save your entries on all tabs.
5. Repeat steps 2-4 for any other brands with price and/or portion modifications.
6. Click **Close** to exit the Prices and Portions Setup screen.

### Default Prices and Portions

- ▶ Until you change them, the prices and portions listed are the defaults you set up with [Brand Wizard](#) for the product type.
- ▶ The "Standard" category is the basic set of price levels assigned to each brand when it's added to the brand list.
- ▶ See [Modify Multiple Brands](#) to modify prices and portions for all brands of a product type on one screen.
- ▶ If you're using Interface, see [How to enter PLUs](#).

## Quick-Start Task 7: Assign Brands

To assign brands to dispensers:



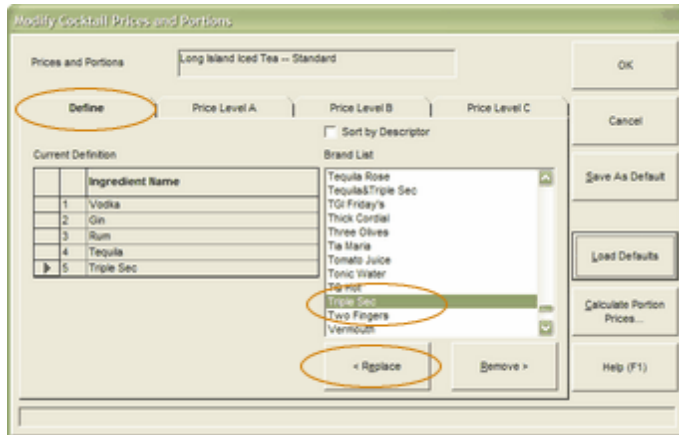
### Assign Brands

- ▶ For convenience on this screen, use the following options:
- ▶ **Dispenser Captions** lets you change the labels on the dispenser tabs. (You can change them anytime.)
- ▶ **Device Address** shows the dispenser number.
- ▶ **Device Name** shows the full dispenser name (the default name or one you've set up).
- ▶ **Dispenser Type** shows the type of dispenser in parentheses after the Device Address or Device Name.
- ▶ Sort Options let you sort the brand list for your convenience. Sort by Descriptor sorts the list by any descriptor(s) you've set up.
- ▶ Category lets you select which categories of price/portions display in the list.
- ▶ Click **Modify...** to see and modify the prices and portions for the highlighted brand.

1. Pull down the **Pouring** menu and click **Assign Brands...**
2. Select the **Equipment Name** and click **OK**.  
*You can select an ECU or a single dispenser. Uptown Grill is assigning brands to the Main Bar ECU we set up.*
3. If you selected an ECU, click a dispenser tab to begin assigning brands.  
*Uptown Grill starts with the Main Laser-16 dispenser. The cursor automatically points to button 1.*
4. Click a brand in the list.  
*Uptown Grill is using "Brandy- Standard". To quickly jump to a brand in the list, click anywhere in the list and type the first letter of the brand name.*
5. Click **<Assign** to place "Brandy" in the Button 1 position. (Or drag and drop "Brandy" to the first line.)
6. Repeat steps 4-5 for the brands you're assigning to the other Laser-16 buttons.  
*When assigning to Laser dispensers, be sure to include all ingredients needed in cocktails.*
7. Click the next dispenser tab (e.g., Main Laser-6).
8. Repeat steps 4-6 to assign brands to this dispenser.
9. Click **OK** to save the brand assignments for both dispensers.
10. Select **No communication at this time** and click **Continue**.  
*This lets you send the assignments later, when you're ready to send all setup information to the equipment at the same time.*
11. Click **OK** to the message about saved changes.
12. Click **Cancel** to exit the Assign Brands screen.

## Quick-Start Task 8: Cocktail Recipes

### To set up cocktail recipes:



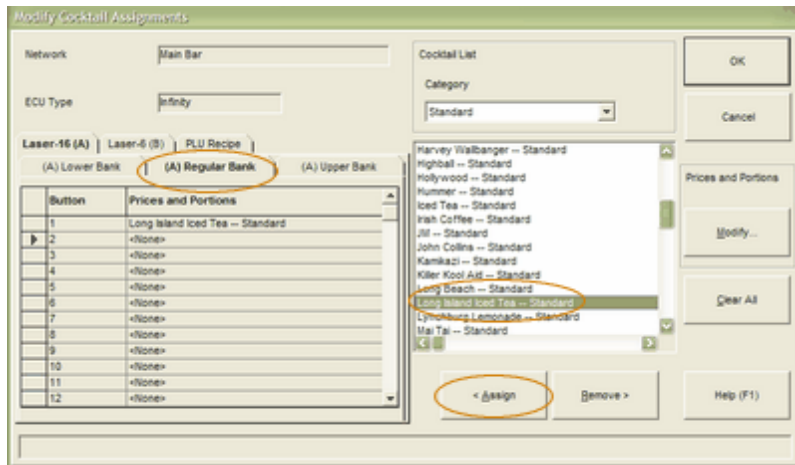
### Cocktail Recipes

- ▶ You can type an Ingredient Portion Price for each ingredient Name or see Calculate Portion Prices for Cocktail Ingredients.
- ▶ If you're using Interface, see How to enter PLUs.

1. Pull down the **Pouring** menu and click **Prices and Portions...**
2. Select **Cocktail** as the **Product Type**.
3. Select the cocktail's **Prices and Portions** you want to change and click **Modify.....**  
*Uptown Grill is modifying Long Island Iced Tea-Standard.*
4. Scroll down the list of Ingredients and click "Vodka-Standard".  
*Click anywhere in the list and type V to jump closer to "Vodka-Standard".*
5. Click **<Replace** to put "Vodka-Standard" in the first line of the cocktail definition. (Or drag and drop to its position.)
6. Repeat steps 4-5 for "Gin-Standard", "Rum-Standard", "Tequila-Standard" and "Triple Sec-Standard".
7. Click the **Price Level A** tab.  
*The cocktail ingredient prices and portions we set up in Brand Wizard appear by default.*
8. If necessary, type the correct **Portion** for each **Ingredient Name**.  
*The portion size of each ingredient determines the actual cocktail recipe.*  
*Uptown Grill is using the Berg defaults.*
9. Type the **Cocktail Price** for Price Level A.
10. Click **OK** to save the cocktail recipe.
11. Repeat steps 3-10 for each cocktail.

## Quick-Start Task 9: Assign Cocktails

To assign cocktails to Laser dispensers:



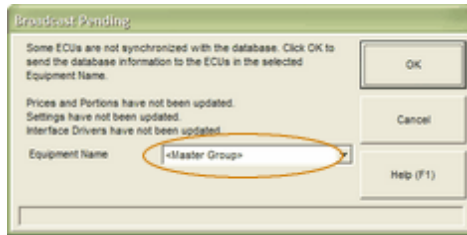
### Assign Cocktails

- ▶ Be sure any ingredients you need for a cocktail are assigned to the gun.
- ▶ If you're using the Reconciliation Report, all ECUs display a tab for PLU Recipes.
- ▶ If you don't need to create any PLU recipes, ignore this tab.
- ▶ For further information, see PLU Recipes and Reconciliation Report.

1. Pull down the **Pouring** menu and click **Assign Cocktails...**
2. Select the **Equipment Name** and click **OK**.  
*You can select an ECU or a single Laser dispenser. Uptown Grill is assigning cocktails to the Main Bar ECU we set up.*
3. If you selected an ECU, click the tab for the correct **Laser** dispenser and the correct Cocktail Bank.  
*Our Laser-16 dispenser displays on tab A with the Regular Bank selected and the cursor at Button 1.*
4. Click a cocktail in the list to assign to **Button 1**.  
*Uptown Grill is using "Long Island Iced Tea-Standard". To quickly jump to a cocktail in the list, click anywhere in the list and type the first letter of the cocktail.*
5. Click **<Assign** to put "Long Island Iced Tea-Standard" in the Button 1 position of the regular bank. (Or drag and drop to the first line.)  
*The cursor automatically advances to the next button.*
6. Repeat steps 4-5 for the remaining **Button** numbers of this dispenser.
7. Repeat steps 3-6 for any other Laser dispenser tab.
8. Click **OK** to save the cocktail assignments for all dispenser tabs.  
*You won't be able to save a cocktail assignment if the ingredients are not already assigned to the dispenser.*
9. Select **No communication at this time** and click **Continue**.  
*This lets you send the assignments later, when you're ready to send all setup information to the equipment at the same time.*
10. Click **OK** to the message about saved changes.
11. Click **Cancel** to exit the Assign Cocktails screen.

## Quick-Start Task 10: Broadcast Pending Changes

To broadcast pending changes:



### Broadcast Pending

- ▶ Send all changes you've made in the software to the hardware in one operation.

1. Pull down the **Management** menu and point to **Setup**. Click **Broadcast Pending...**

*A list of all the pending changes displays.*

2. Select <Master Group> as the **Equipment Name**.

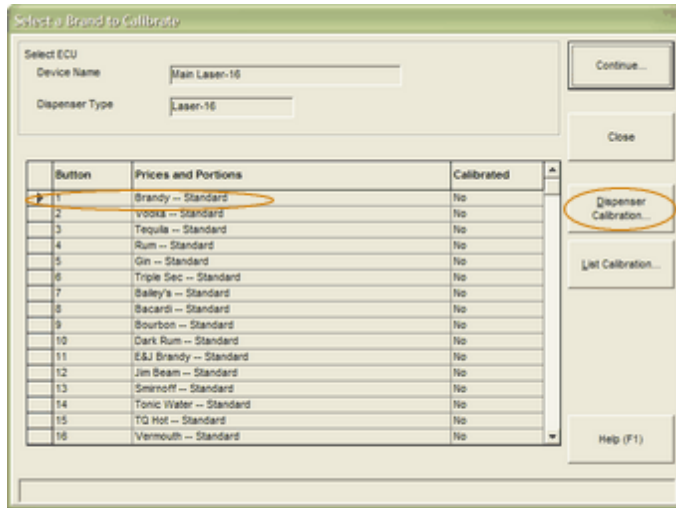
3. Click **OK** to send the changes.

4. Wait for communication with the equipment.

*Now all equipment has all the setup information we've entered.*

## Quick-Start Task 11: Dispenser Calibration

### To perform dispenser calibration:



### Calibration

- ▶ Dispenser calibration copies the calibration values of one brand to all brands at the dispenser.
- ▶ If you have an All-Bottle 7 dispenser, see Align Activator Rings and Store Alignment Values before calibrating.
- ▶ It's helpful to have a partner or carry a portable computer from dispenser to dispenser when performing the calibration procedure.
- ▶ For further help with calibration, see: Calibration Overview.
- ▶ To calibrate by weight, set your Calibration Units to grams before calibrating.

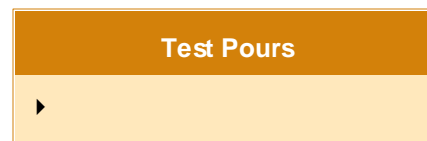
1. Pull down the **Management** menu and point to **Calibration**. Click **Calibrate....**
2. Select the **Equipment Name**.  
*Uptown Grill is calibrating the Main Laser-16 dispenser we set up.*
3. Click **OK**.
4. Click a brand on the dispenser and click **Dispenser Calibration....**  
*If all brands at the dispenser are of similar viscosity, choose any one of them. Don't choose an especially "thick" brand. Uptown Grill is leaving the cursor at Button 1 "Brandy-Standard".*
5. Click **Yes**.
6. Click **OK** to confirm.
7. Go to the Laser-16 dispenser and pour a small portion from the Button you selected into a measuring cup or graduated cylinder. Record the amount or weight of the pour. Then pour a large portion and record the amount.
8. At the computer, type the exact amount or weight of the **Small Portion** and the **Large Portion** click **OK**.
9. If the values are not within the accuracy range, click **Yes** to re-calibrate. Repeat steps 6 and 7 as needed. When the values are within the accuracy range, click **OK**.  
*All brands at the Laser-16 dispenser are now calibrated with the values of the first brand. Proceed with making test pours to determine which specific brands need further calibration.*
10. Click **Close** to exit.
11. Repeat steps 2-10 for any other dispensers.



## Quick-Start Task 12: Make Test Pours

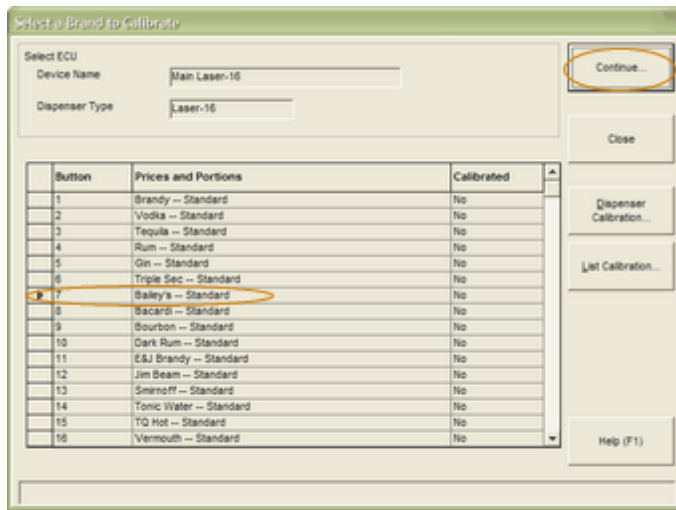
### To make test pours:

1. Go to the dispenser (e.g., Main Laser-16) where you performed Dispenser Calibration.
2. Using a graduated cylinder or measuring cup, make several test pours of various brands at the gun (particularly those with a different viscosity).
3. Record the exact amount of the pours.
4. Compare the test pour amounts with the expected portion size to see if the brands are calibrated correctly.  
*For example, Uptown Grill used Brandy to calibrate the dispenser. Brandy now pours a correct Small Portion of 1 oz. However, Rum (on Button 2) pours closer to 1.5 oz for a Small Portion. So we need to perform brand calibration for Button 2.*
5. Go to another dispenser and repeat steps 2-4.
6. Perform Brand Calibration for each brand you've determined needs further calibration.



## Quick-Start Task 13: Brand Calibration

### To calibrate a specific brand:



### Brand Calibration

- ▶ Perform brand calibration for any brand that is still not pouring correctly after a dispenser calibration.
- ▶ If you have an All-Bottle 7 dispenser, see Align Activator Rings and Store Alignment Values before calibrating.
- ▶ It's helpful to have a partner or carry a portable computer from dispenser to dispenser when performing the calibration procedure.
- ▶ For further help with calibration, see: Calibration Overview.

1. Pull down the **Management** menu and point to **Calibration**. Click **Calibrate....**
2. Select the **Equipment Name**.  
*Uptown Grill is calibrating a brand on the Main Laser-16 dispenser we set up.*
3. Click **OK**.
4. Click a brand on the dispenser.  
*Uptown Grill is calibrating "Bailey's- Standard".*
5. Click **Continue....**
6. Click **OK** to confirm.
7. Go to the Laser-16 dispenser and pour a small portion of Bailey's into a measuring cup or graduated cylinder. Record the amount of the pour. Then pour a large portion and record the amount.
8. At the computer, type the exact amount of the **Small Portion** and the **Large Portion** click **OK**.
9. If the values are not within the accuracy range, click **Yes** to re-calibrate. Repeat steps 7 and 8 as needed. When the values are within the accuracy range, click **OK**.  
*Bailey's is now calibrated.*
10. Repeat steps 4-9 for any other brands at this dispenser that need calibration.
11. Click **Close** to exit.
12. Repeat steps 2-11 for any other dispensers with brands that need calibration

## Quick-Start Task 14: Archive and Clear Sales

### To archive and clear sales:

1. Pull down the **Reports** menu and click **Archive and Clear (Z)...**
2. Select <Master Group> as the **Equipment Name**.  
*Uptown Grill wants to clear sales at all equipment.*
3. Click **Run**.
4. Click **OK** to confirm.  
*Wait while the data is retrieved from the ECU(s).*
5. View, save or print the report. See View Report.
6. Click **Close** to exit the View screen.
7. If prompted, click **OK** to confirm closing the screen without saving or printing.

### Archive & Clear Sales

- ▶ When you archive and clear sales, you reset all totals at the ECUs to zero and send the data to archive records at the computer.
- ▶ See Archive and Clear Sales for more information.
- ▶ See Current Sales Totals/Clear Sales (Z) Report for a description of the report.

## Quick-Start Task 15: Usage Report

### To run a Usage report:

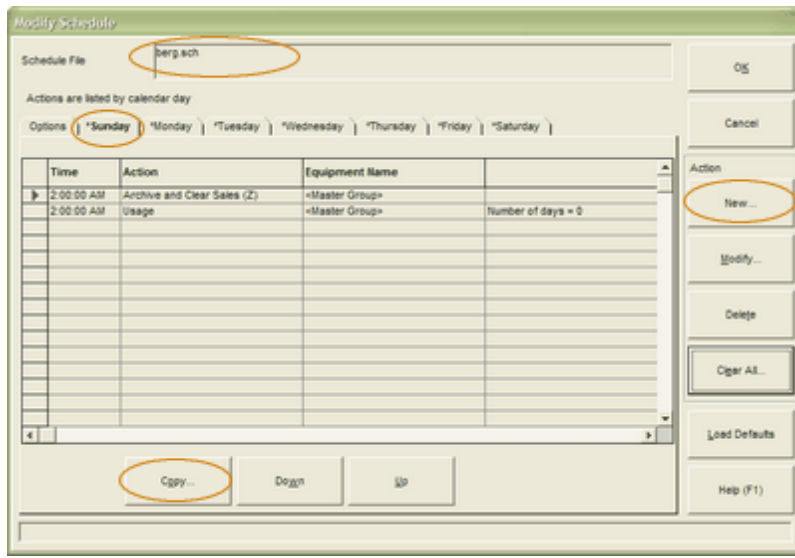
1. Pull down the **Reports** menu. Click **Advanced Reports...**
2. Select **Usage**.  
*You'll see <Master Group> is already selected for the Equipment Name, which is what we want.*
3. Click **View**.  
*Wait while the report is run.*
4. View, save or print the report. See View Report.  
*Since we used the Most Recent Archive data to run the report, the totals are the same as those in the Archive and Clear Sales report.*
5. Click **Close** to exit the View screen.
6. If prompted, click **OK** to confirm closing the screen without saving or printing.

### Usage Report

- ▶ See Usage Report for a description of the report.

## Quick-Start Task 16: Schedule

To set up a schedule:



### Schedule

- ▶ For further help with schedules, see:
  - Schedules
  - About BERG.SCH
  - Define Action
  - Time Schedule Setup
  - On Demand Schedule Setup

1. Pull down the **Scheduling** menu and click **Schedules...**  
The file *berg.sch* displays in the **Schedule File** field.
2. Click **Modify...**  
A schedule appears with the name *berg.sch*. Since *Uptown Grill* is using the default schedule options, we won't change anything on the **Options** tab.
3. Click one of the day tabs.  
*Uptown Grill* starts its schedule on Sunday. On an initial install of *Infinity*, a schedule will be created for you that runs an *Archive and Clear* every hour. To remove any *Archive and Clear* you don't want, select it and click **Delete**.
4. Click **New...** to add a schedule **Action**.
5. Type a **Time**, select an **Action**, leave <Master Group> as the **Equipment Name** and click **OK**.  
*Uptown Grill* is scheduling an *Archive and Clear Sales* report for all equipment at 2:00 AM--closing time.
6. Repeat steps 4 and 5 for additional actions on the same day.  
*Uptown Grill* is also scheduling a *Usage* report at closing time, using data from 0 days ago--today.
7. Click a new day tab when you've completed your first day.
8. Click **Yes** if you want to copy all the actions to the new day.
9. Repeat steps 7 and 8 for each day with identical actions.  
OR  
Click **Copy...** and select <All> to copy the actions to all days of the week.  
*Uptown Grill* wants these same reports each day at closing, so we use **Copy** to quickly populate all days with Sunday's actions.
10. If you need different actions on any day, click a new day tab and answer **No** to copying. Then repeat steps 4-6 to define new actions.
11. Click **OK** to save the schedule.
12. Click **Run** to start the schedule.  
You can still perform other tasks in *Infinity*. Note *Infinity* must be running when you want the scheduled actions to occur.
13. Click **Close** to exit the Schedules screen.